



## CATERHAM SCHOOL

### **Positive Parents' Attitudes Revealed in Independent Survey**

In March 2009 an independent research company, Kirkland Rowell, conducted a study to establish the perceptions of parents, resident in the UK, with children at Caterham School. The questionnaires were all anonymous. The results of parents who expressed an opinion are reproduced below.

The purpose of the research was to help us plan for the future. We are constantly trying to improve the education that we offer and we need parents to tell us how well we are doing and how we can improve the things that are important to them.

This Kirkland Rowell research has also been carried out in 38 other top independent schools, which allowed them to benchmark our parents' opinions against those of the other schools.

We last conducted this survey in 2006 and the results were very useful as they helped us to identify some areas that we needed to address. This year there were some areas showing improvement whilst we retained our strengths in many other areas.

In the criteria identified by parents as the most important we achieved pleasing scores.

	Very good/good	Neither good nor poor	Poor/very poor
<b>Overall Performance</b>	<b>92 %</b>	<b>4%</b>	<b>3%</b>

*Kirkland Rowell have informed us that, in comparison with the other top independent schools that have taken part in the research, this figure is "exceptional".*

Teaching quality	87%	10%	3%
Exam results	90%	9%	1%
School facilities	91%	6%	3%
Developing potential	77%	18%	5%
Happiness of child	83%	11%	6%
Developing Confidence	70%	24%	6%
School discipline	80%	14%	6%

Kirkland Rowell compared our scores across all the non-academic criteria that form the core parent priorities with those achieved by other top independent schools. They reported that all our scores were 'exceptional' or 'good' with none falling into the 'satisfactory' or 'poor' level.

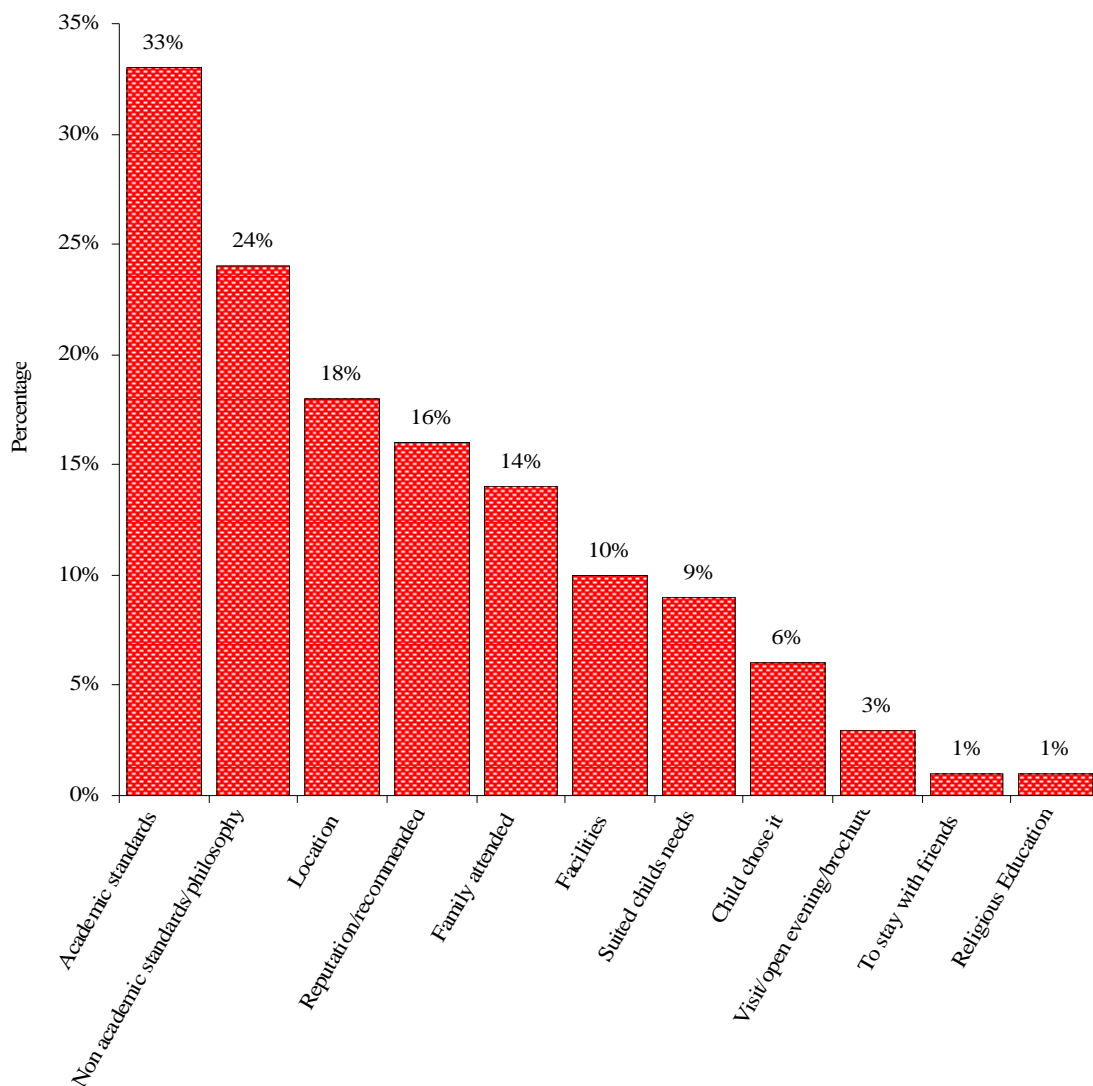
On individual academic subjects it was most encouraging to see that all subjects achieved a "success" rating by Kirkland Rowell with some significant improvements in particular subjects.

Whilst the results were very favourable there were, as anticipated, a few areas that the research suggested we should address. However, in some cases there were conflicting messages. For instance in a couple of areas that were identified for improvement we had achieved a better rating than 38 similar schools. So we need to gain a better understanding in these particular cases and we shall therefore continue to consult parents over these matters. There were also some areas which we had started to investigate and the research confirmed that these issues needed to be addressed. Also whilst the overall performance is excellent, we cannot overlook the fact that that a small percentage of parents are unhappy about certain areas and we will seek to address these issues.

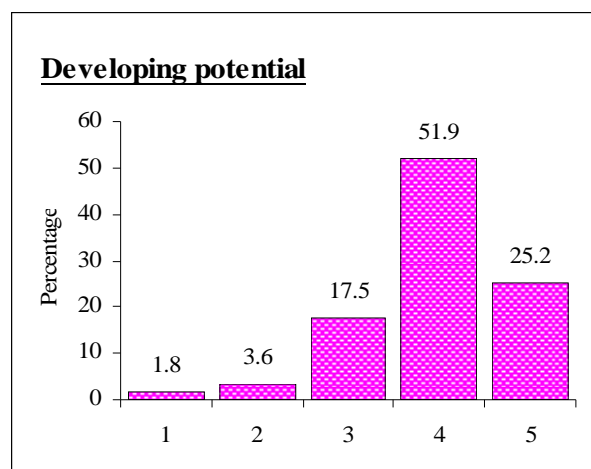
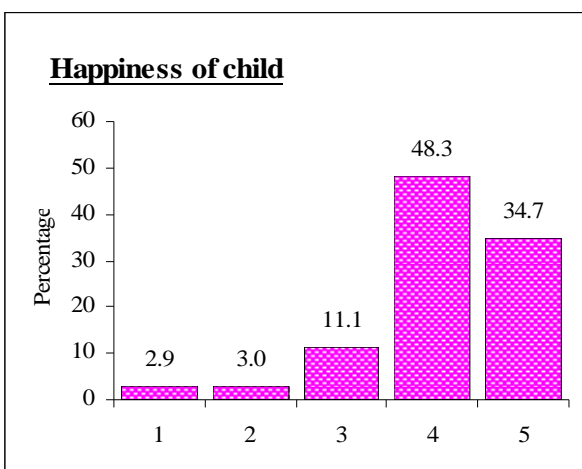
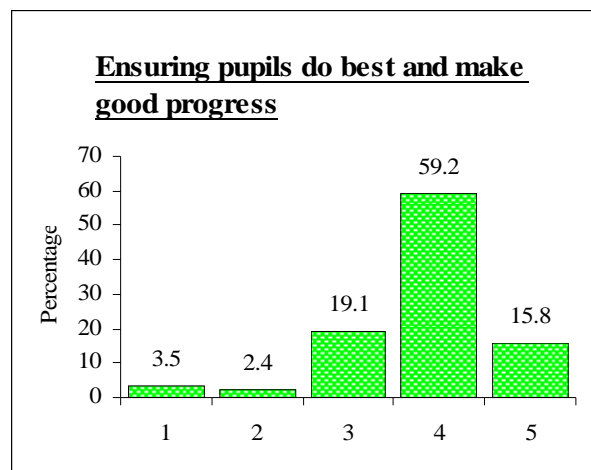
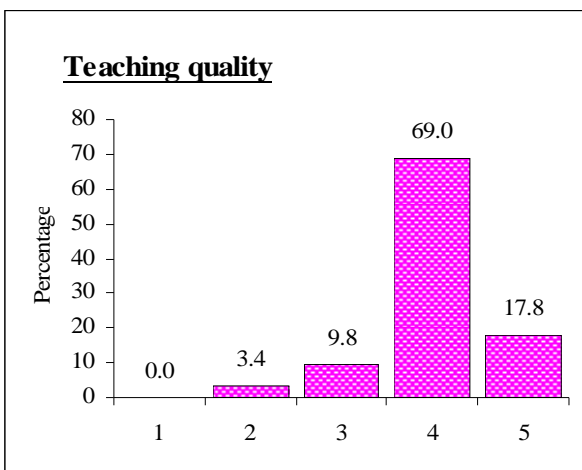
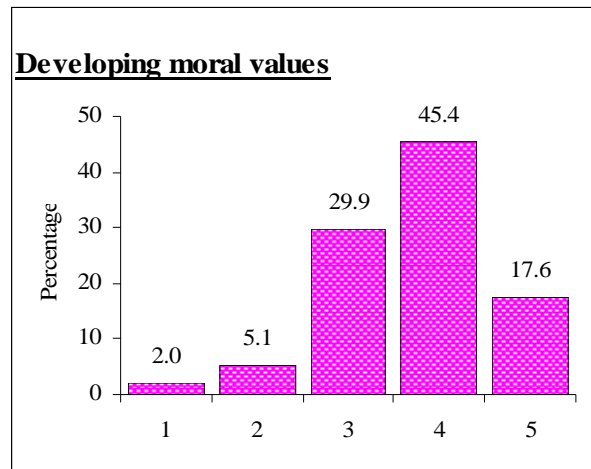
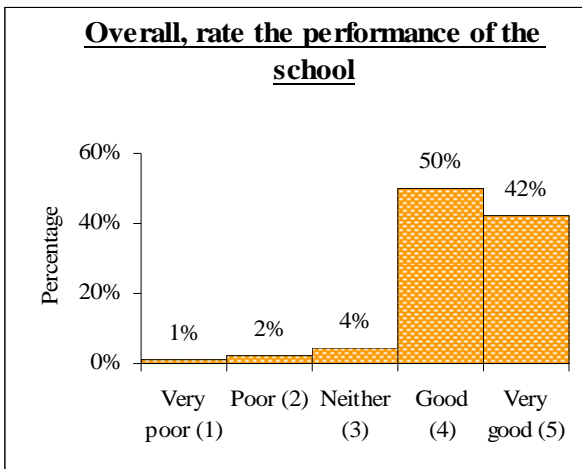
The areas for improvement will be incorporated into the School's Development Plan which is updated each year.

**Graph to show why parents chose to send their child to Caterham School**

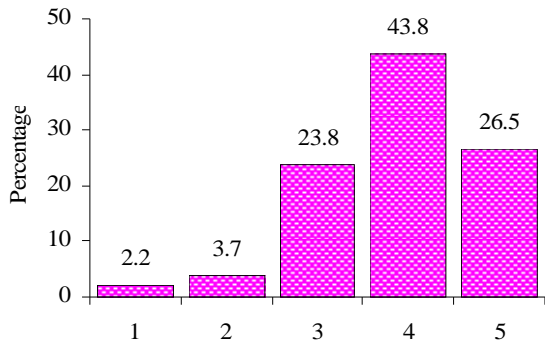
(Some parents chose more than one option.)



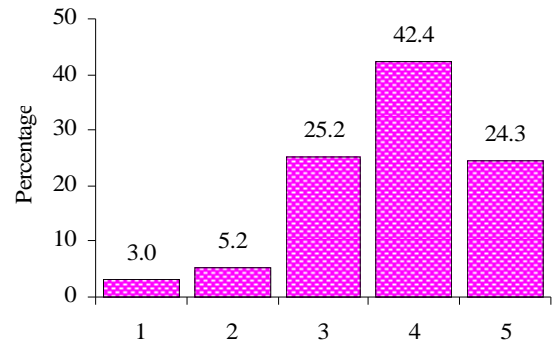
The following selected charts report on a number of criteria. The charts are based on a response of 1 -5, where 1 represents 'very poor', 2 represents 'poor', 3 is 'average', 4 is 'good' and 5 represents 'very good'.



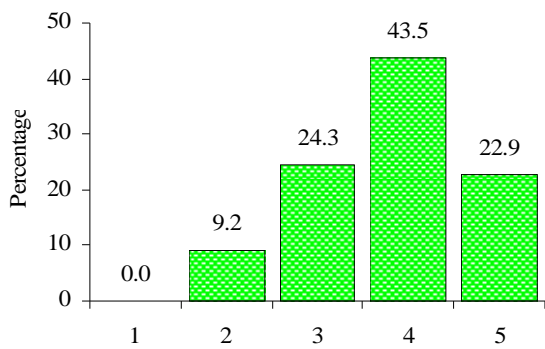
### Developing Confidence



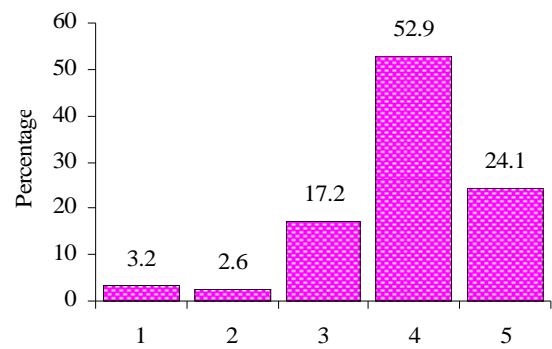
### Community spirit



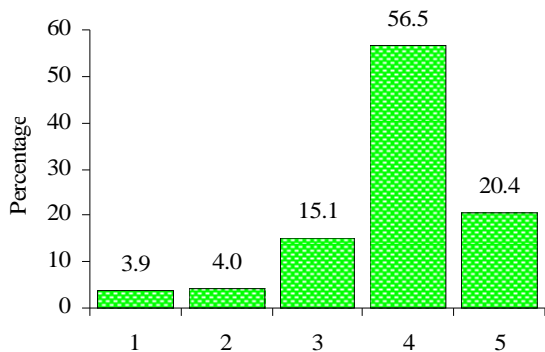
### Extra curricular activities



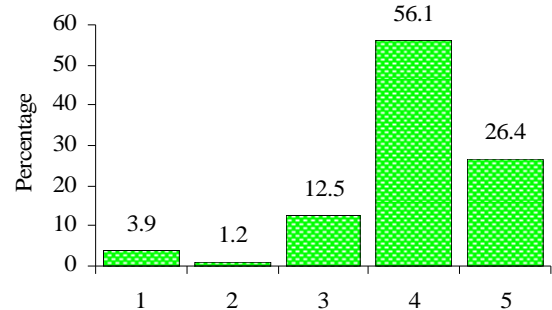
### Caring teachers



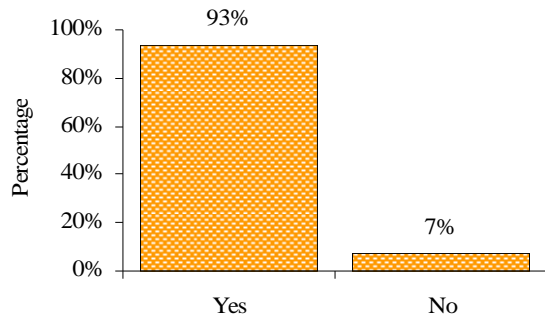
### Quality of school management



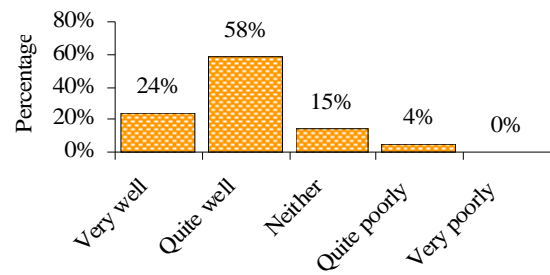
### School's image in the local community



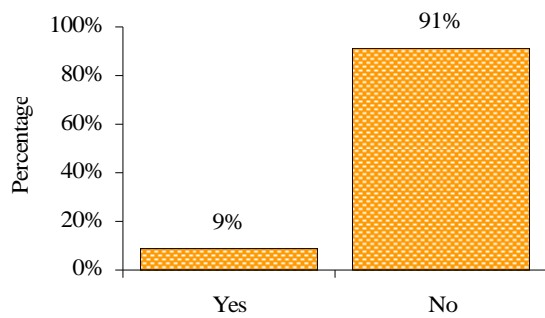
**Does the school encourage your child to think independently?**



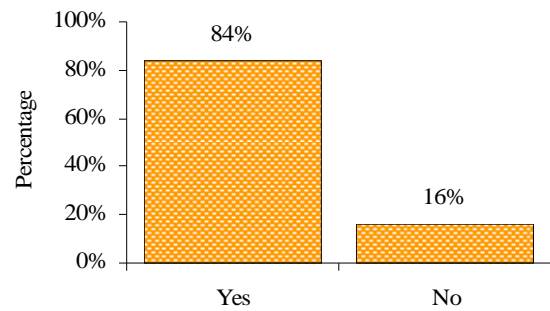
**How well does Caterham School tailor your child's work to their needs & ability?**



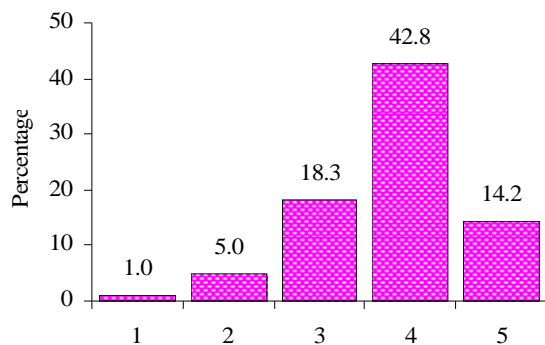
**Pushed too hard in anything?**



**School encourages healthy lifestyle through exercise**



**Control of bullying**



**Access to staff**

