



---

# CATERHAM SCHOOL

March 2011

## ***The Fashion & Textile Children's Trust***

Dear Parents

I am writing to draw your attention to a source of bursary funding which may be of interest.

*The Fashion & Textile Children's Trust* is a registered charity able to offer financial support to assist with School fees. Their criteria for considering an award is as follows:

***The parent must have worked in the fashion or textile sector either previously or currently. By the term "fashion or textile" this covers all aspects: department store, head office, call centre, warehouse, manufacturer, supplier, machinist, costume design, soft furnishings, bridalwear, swimwear, footwear etc.***

I have attached further information which gives details about how to apply. If any parent is interested in applying, I would strongly suggest an early application.

Yours sincerely

**Julian Thomas**  
**Headmaster**

Headmaster: Julian Thomas BSc (Hons) MBA FRSA

Harestone Valley Road, Caterham Surrey CR3 6YA Telephone 01883 343028 Fax 01883 347795

E-mail: [enquiries@caterhamschool.co.uk](mailto:enquiries@caterhamschool.co.uk) Website: [www.caterhamschool.co.uk](http://www.caterhamschool.co.uk)

---

Caterham School Limited Company No. 5410420 Registered Charity No. 1109508

An Associate School of the United Church Schools Trust

## 🧑‍🎓 Supporting families since 1853

The origin of the Fashion & Textile Children's Trust was an institution founded in 1853 to "clothe, maintain and educate the children of warehousemen, clerks and agents of the textile industry." The founders, a group of textile merchants who wanted to help the bereaved family of a colleague, quickly attracted attention with their good works – Charles Dickens acted as Chairman of Appeal in 1856 and 1857.

Today, the Fashion & Textile Children's Trust is continuing the work of supporting the education of those children who are most in need, but in a way appropriate for people who work in the fashion and textile industries today.

**Our aim is to help support the education of the children of people who work in the fashion and textile industries.**

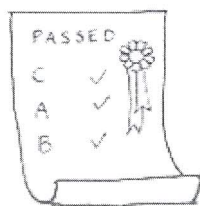
**We are committed to making a real difference for those that need our help the most.**

Sometimes we've been able to support children with special talents – sports, music, dance or drama – and provide tutorial support to children with special educational and physical needs.

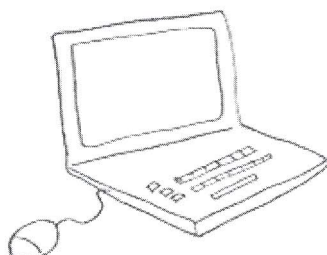
We can also help children with grants when their family circumstances become so difficult that it is affecting their education.

**Find out more about our grants at [www.ftct.org.uk](http://www.ftct.org.uk)**

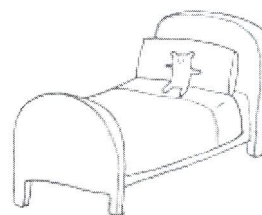
Patron: Her Majesty the Queen



educational grants



help with special needs



welfare essentials

---

## ⊕ Want to get involved?

We are a small charity that depends on the generous support of volunteers and supporters. There are lots of ways you can help - it could be volunteering, fundraising, making a donation or helping us reach out to people in need of our help.

## ⊕ Need a helping hand?

We may be able to provide a grant to help your children reach their full potential.

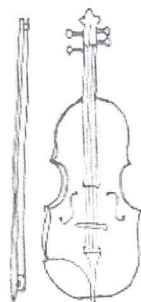
If you work in fashion retail or textiles and need some help, please do get in touch:

Fashion & Textile Children's Trust  
Winchester House  
259 -269 Old Marylebone Road  
London NW1 5RA  
T 020 7170 4117  
E [anna@ftct.org.uk](mailto:anna@ftct.org.uk)  
[www.ftct.org.uk](http://www.ftct.org.uk)

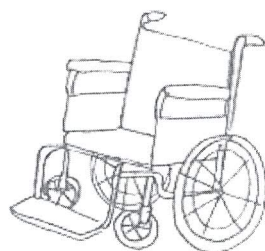
Join us online

 twitter

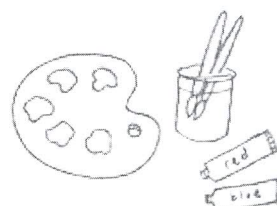
 facebook



support for special talents

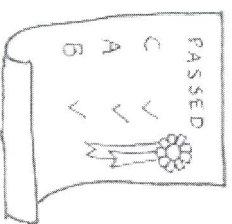


mobility

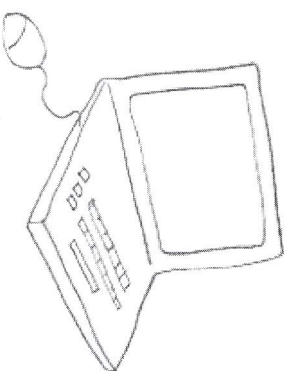


course equipment

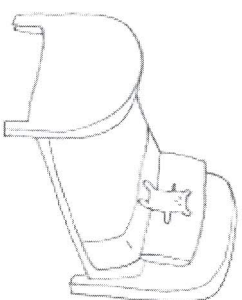
We may be able to provide a grant to help your children reach their full potential. If you work in fashion retail or textiles and need some help, visit [www.ftct.org.uk](http://www.ftct.org.uk) or call us in confidence on **020 7170 4117**



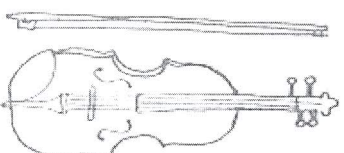
educational grants



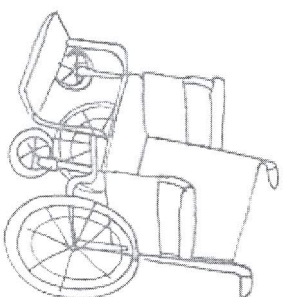
help with special needs



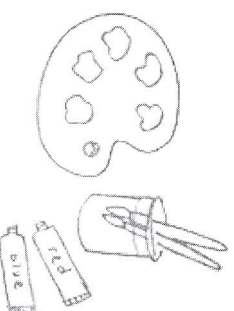
welfare essentials



support for special talents



mobility



course equipment